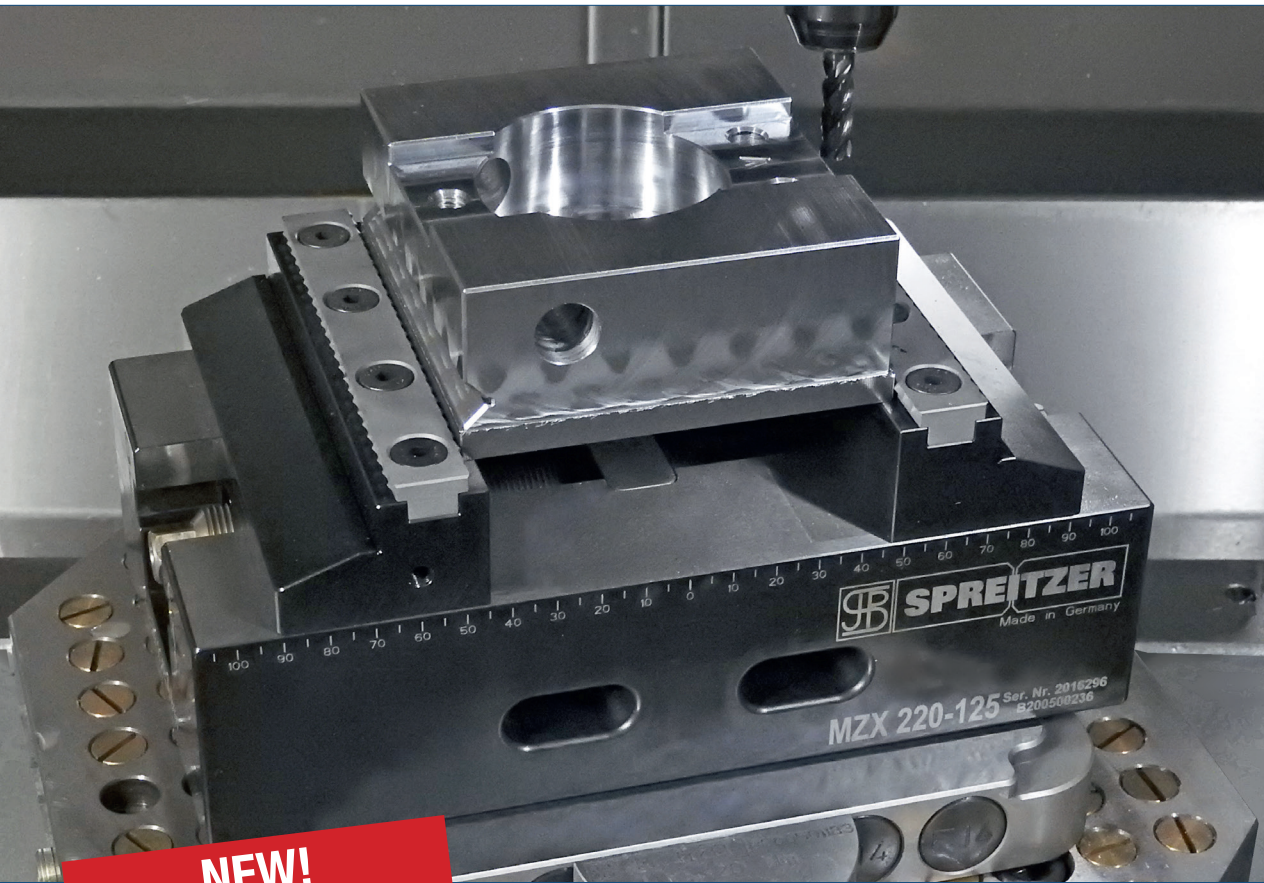


# Mechanical centre-clamping vises MZX

The 5-axis vise for zero-point systems.



**NEW!  
LARGE VARIETY**

Raw and finished parts clamping.  
Powerful. Universal. Process-reliable.

# Mechanical centre-clamping vises MZX

The MZX centre-clamping vise series is a powerful, universal, and reliable clamping device for use with zero-point systems. The vise base body is prepared with system holes suitable for LANG or other market-leading systems (grid size □ 52 × 52 mm / □ 96 × 96 mm). The robust and compact design ensures maximum clamping forces and enables secure and efficient workpiece clamping.

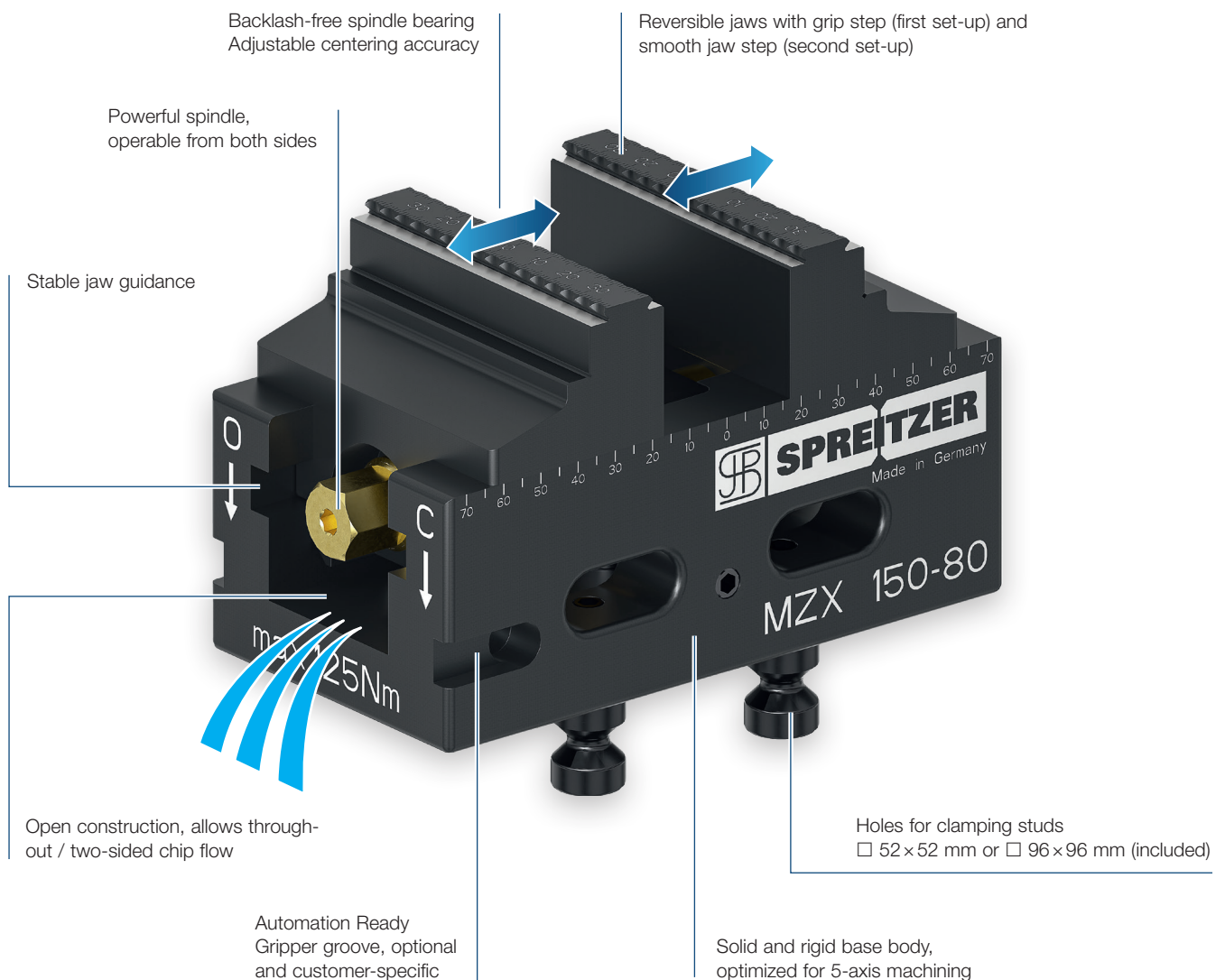
Whether raw part clamping with or without pre-stamping – our reversible jaw variants offer the ideal solution for every application.

The proven durability and reliability of SPREITZER ensure maximum process reliability and dependability in manufacturing.

## + Strong Points

- + Powerful, universal, and process-reliable
- + Reversible jaws suitable for LANG stamping technology
- + Base body compatible with LANG zero-point system or other market-leading systems with grid size □ 52 × 52 mm or □ 96 × 96 mm

Our product videos can be found at: [www.spreitzer.de/media](http://www.spreitzer.de/media)



# Variety of versions – Perfect for 5-sided machining

The solid, one-piece jaw concept and optimized guide length prevent workpiece lifting and ensure even, reliable clamping.

Whether raw or finished parts – our reversible jaws provide the ideal clamping solution. They offer an extended clamping range while maintaining optimal accessibility to the workpiece.



## Material

- Tempered tool steel

## Finish

- Surface hardened / burnished
- Functional surfaces precision grinded
- Hardened spindle
- Fitted reversible jaws



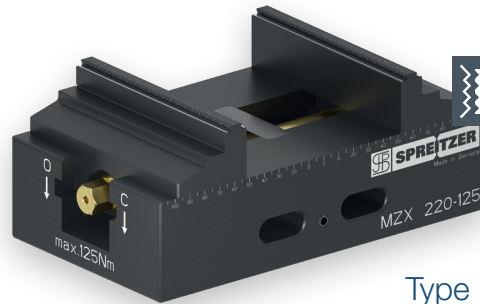
## Accuracy

- Repetition accuracy 0.01 mm
- Pairing accuracy 0.03 mm
- Center adjustment via pin wrench
- Clamping center adjustment for precise alignment of multiple vises



## Practical advice

The outer contour of the vises can optionally be delivered with a customer-specific gripper groove.



**RAW MATERIAL CLAMPING WITH PRE-STAMPING**

## Type LA

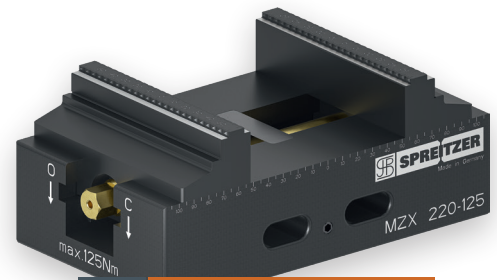
Reversible grip jaws according to the LANG system

- Pre-stamping of the holding serration required.

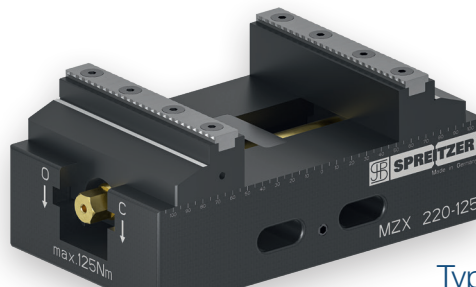
## Type SP

Reversible grip jaws according to the SPREITZER system

- Raw part clamping without pre-stamping.
- Best results with workpieces up to 600 N/mm<sup>2</sup> material strength.



**RAW MATERIAL CLAMPING WITHOUT PRE-STAMPING**

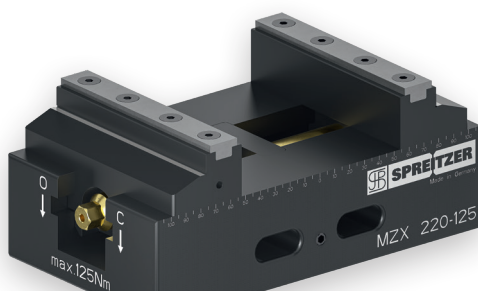


**RAW MATERIAL CLAMPING WITHOUT PRE-STAMPING**

## Type GL

Reversible step jaws with grip inserts

- Flexible raw part clamping without pre-stamping.
- Grip inserts / clamping inserts can be replaced depending on the workpiece requirements.
- Best results with workpieces up to 1100 N/mm<sup>2</sup> material strength.



**RAW MATERIAL CLAMPING WITHOUT PRE-STAMPING**

## Type SL

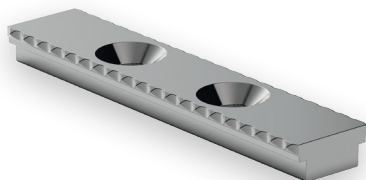
Reversible step jaws with clamping inserts, rough with coating / carbide coating

- Flexible raw part clamping without pre-stamping
- Clamping inserts can be replaced depending on the workpiece requirements.
- Best results with workpieces over 1100 N/mm<sup>2</sup> material strength and for tough, hard material surfaces.

Type	Order no.	Jaw width [mm]	L × B × H [mm]	Grid dimension [mm]	Stroke [2 × mm]	Clamping width [mm]*	Clamping force [N]**	M max [Nm]	Weight [kg]
MZX 130-60 LA	B200500222	60	130 × 80 × 82	□ 52 × 52	32	114	22 500	60	4
MZX 130-60 SP	B200500223	60	130 × 80 × 83	□ 52 × 52	32	104	30 000	80	4,5
MZX 130-60 GL	B200500224	60	130 × 80 × 83	□ 52 × 52	32	93	30 000	80	4,5
MZX 130-60 SL	B200500241	60	130 × 80 × 83	□ 52 × 52	32	93	30 000	80	4,5
MZX 150-80 LA	B200500225	80	150 × 80 × 89	□ 52 × 52	32	134	32 500	100	5
MZX 150-80 SP	B200500226	80	150 × 80 × 90	□ 52 × 52	32	124	40 000	125	5,5
MZX 150-80 GL	B200500227	80	150 × 80 × 90	□ 52 × 52	32	114	40 000	125	5,5
MZX 150-80 SL	B200500242	80	150 × 80 × 90	□ 52 × 52	32	114	40 000	125	5,5
MZX 220-80 LA	B200500228	80	220 × 80 × 89	□ 52 × 52	67	204	32 500	100	7
MZX 220-80 SP	B200500229	80	220 × 80 × 90	□ 52 × 52	67	194	40 000	125	7
MZX 220-80 GL	B200500230	80	220 × 80 × 90	□ 52 × 52	67	184	40 000	125	7,5
MZX 220-80 SL	B200500243	80	220 × 80 × 90	□ 52 × 52	67	184	40 000	125	7,5
MZX 150-125 LA	B200500231	125	150 × 125 × 89	□ 96 × 96	32	134	32 500	100	10,5
MZX 150-125 SP	B200500232	125	150 × 125 × 90	□ 96 × 96	32	124	40 000	125	11
MZX 150-125 GL	B200500233	125	150 × 125 × 90	□ 96 × 96	32	114	40 000	125	11,5
MZX 150-125 SL	B200500244	125	150 × 125 × 90	□ 96 × 96	32	114	40 000	125	11,5
MZX 220-125 LA	B200500234	125	220 × 125 × 89	□ 96 × 96	67	204	32 500	100	11,5
MZX 220-125 SP	B200500235	125	220 × 125 × 90	□ 96 × 96	67	194	40 000	125	12
MZX 220-125 GL	B200500236	125	220 × 125 × 90	□ 96 × 96	67	184	40 000	125	12
MZX 220-125 SL	B200500245	125	220 × 125 × 90	□ 96 × 96	67	184	40 000	125	12
MZX 320-125 LA	B200500237	125	320 × 125 × 89	□ 96 × 96	116	304	32 500	100	18,5
MZX 320-125 SP	B200500238	125	320 × 125 × 90	□ 96 × 96	116	294	40 000	125	19
MZX 320-125 GL	B200500239	125	320 × 125 × 90	□ 96 × 96	116	284	40 000	125	19,5
MZX 320-125 SL	B200500246	125	320 × 125 × 90	□ 96 × 96	116	284	40 000	125	19,5

\* with reversible jaws / \*\* Clamping force is the arithmetic sum of the individual forces occurring at the jaws.  
Further sizes and types upon request.

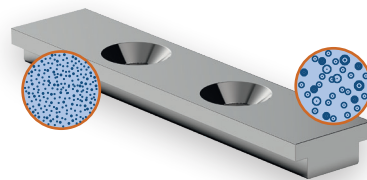
## Grip insert



### Form-fit clamping of raw material.

The hardened surface of the grip inserts penetrates the workpiece surface during clamping, increasing the holding force at the clamping point. A special coating protects against premature wear.

## Clamping inserts, rough with coating / carbide coating



### 1st Side: Form-fit clamping of hard raw material.

The hardened surface of the grip inserts penetrates the workpiece surface during clamping, increasing the holding force at the clamping point. A special coating protects against premature wear.

### 2nd Side: Clamping of ground material.

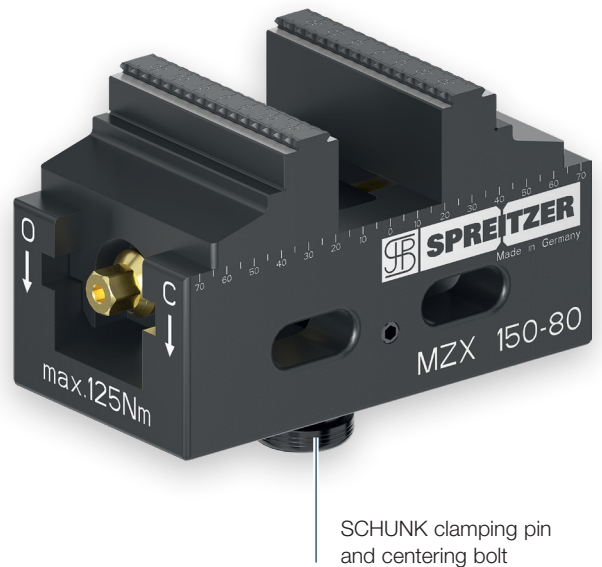
High holding force due to increased friction factor at the clamping point – without damaging the workpiece surface.

# Direct combination with zero-point systems

The mounting holes in the base of our centre-clamping vises, compact vises and alternative clamping devices enables the combination with various zero-point systems or serves for easy mounting on standard palletizing and automation systems.

**SPREITZER**

- SYSTEM 3R
- EROWA
- HIRSCHMANN
- LANG
- PAROTEC
- SCHUNK
- STARK
- UNILOCK
- Vischer & Bolli
- ZeroClamp
- Zero.Point.Systems
- ...



**i** The underside of the centric vises allows for the integration of custom mounting holes for commonly available zero-point systems.

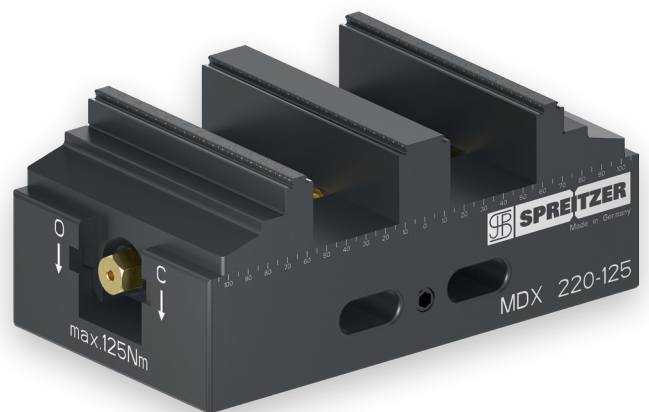
# Mechanical double vise MDX

The mechanical double vise MDX enable the secure and precise clamping of two workpieces against a fixed stop. Thanks to the special spindle bearing, workpieces with a length difference of up to 2 mm can be clamped without any issues.

Whether clamping raw parts with or without pre-stamping – our interchangeable jaw variants offer the ideal solution.

**Third-Hand Function**

The first workpiece is already held in place while the second workpiece is fixed by further turning the spindle.



**+ Strong Points**

- + Clamping of two workpieces against fixed stop
- + Wide clamping range by reversible jaws
- + Highest flexibility

## Centre-clamping vises – Catalogue order



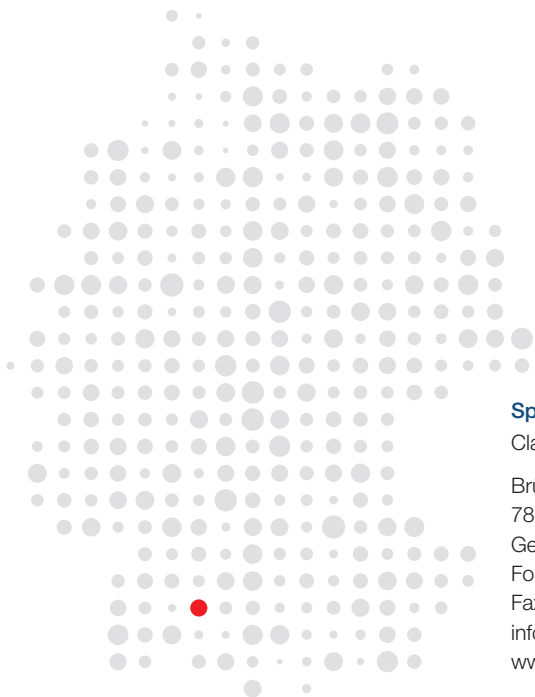
Order our Centre-clamping vises catalogue at:  
[www.spreitzer.de/en/service/catalogue-order](http://www.spreitzer.de/en/service/catalogue-order)



## Centre-clamping vises – Catalogue download



Download our Centre-clamping vises catalogue at:  
[www.spreitzer.de/pdf\\_en/centre\\_clamping\\_vise.pdf](http://www.spreitzer.de/pdf_en/centre_clamping_vise.pdf)



**Spreitzer GmbH & Co. KG**  
Clamping | Testing | Automation  
Brücklestraße 21  
78559 Gosheim  
Germany  
Fon +49 (0) 74 26 - 94 75-0  
Fax +49 (0) 74 26 - 94 75-20  
[info@spreitzer.de](mailto:info@spreitzer.de)  
[www.spreitzer.de](http://www.spreitzer.de)

